



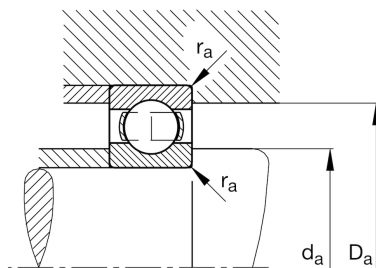
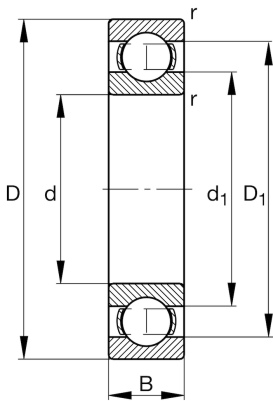
FAG

6026

Deep groove ball bearing

Schaeffler ID:
0167185500000Deep groove ball bearing 60, single row,
steel sheet metal cage

Technical information

**Main Dimensions & Performance Data**

d	130 mm	Bore diameter
D	200 mm	Outside diameter
B	33 mm	Width
C_r	113.000 N	Basic dynamic load rating, radial
C_{0r}	101.000 N	Basic static load rating, radial
C_{ur}	5.000 N	Fatigue load limit, radial
n_G	4.500 1/min	Limiting speed
n_{gr}	4.350 1/min	Reference speed
	3,42 kg	Weight

Dimensions

r_{min}	2 mm	Minimum chamfer dimension
D_1	177,9 mm	Shoulder diameter outer ring
d_1	153,3 mm	Shoulder diameter inner ring

Mounting dimensions

$d_{a min}$	138,8 mm	Minimum diameter shaft shoulder
$D_{a max}$	191,2 mm	Maximum diameter of housing shoulder
$r_{a max}$	2 mm	Maximum fillet radius

Calculation factors

f_0	15,8	Calculation factor
-------	------	--------------------

Temperature range

T_{min}	-30 °C	Operating temperature min.
T_{max}	150 °C	Operating temperature max.